



# **Harborough Local Plan: Proposed Submission Draft Local Plan**

**Sustainability Appraisal - Appendix F**

## **Harborough District Council**

**Final report**

Prepared by LUC

February 2025

Version	Status	Prepared	Checked	Approved	Date
1	Draft Sustainability Appraisal Report for the Proposed Submission Draft Local Plan	H. Naylor L. Haddad H. Ennis	K. Nicholls	K. Nicholls	08.11.2024
2.	Final Sustainability Appraisal Report for the Proposed Submission Draft Local Plan	H. Naylor L. Haddad H. Ennis	K. Nicholls	K. Nicholls	04.02.2025



**Land Use Consultants Limited**

Registered in England. Registered number 2549296. Registered office: 250 Waterloo Road, London SE1 8RD. Printed on 100% recycled paper

# Contents

**Appendix F** **4**  
Location of Site Options

## Table of Figures

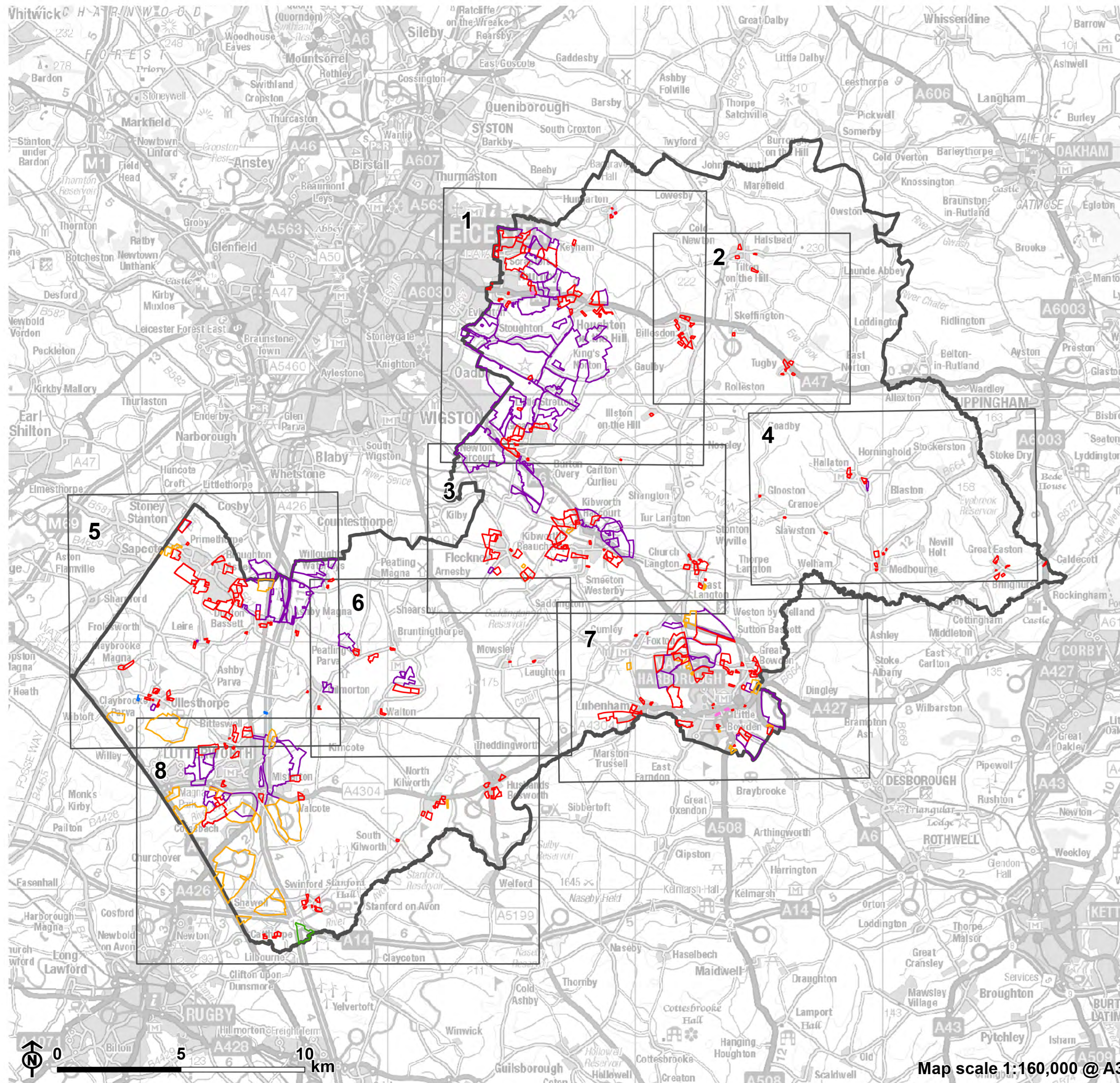
Figure F.1: Site Options - Grid Overview 5  
Figure F.2: Site Options Grid 1 of 8 6  
Figure F.3: Site Options Grid 2 of 8 7  
Figure F.4: Site Options Grid 3 of 8 8  
Figure F.5: Site Options Grid 4 of 8 9  
Figure F.6: Site Options Grid 5 of 8 10  
Figure F.7: Site Options Grid 6 of 8 11  
Figure F.8: Site Options Grid 7 of 8 12  
Figure F.9: Site Options Grid 8 of 8 13

# Appendix F

## Location of Site Options



**Figure E.1: Site Options - Grid Overview**



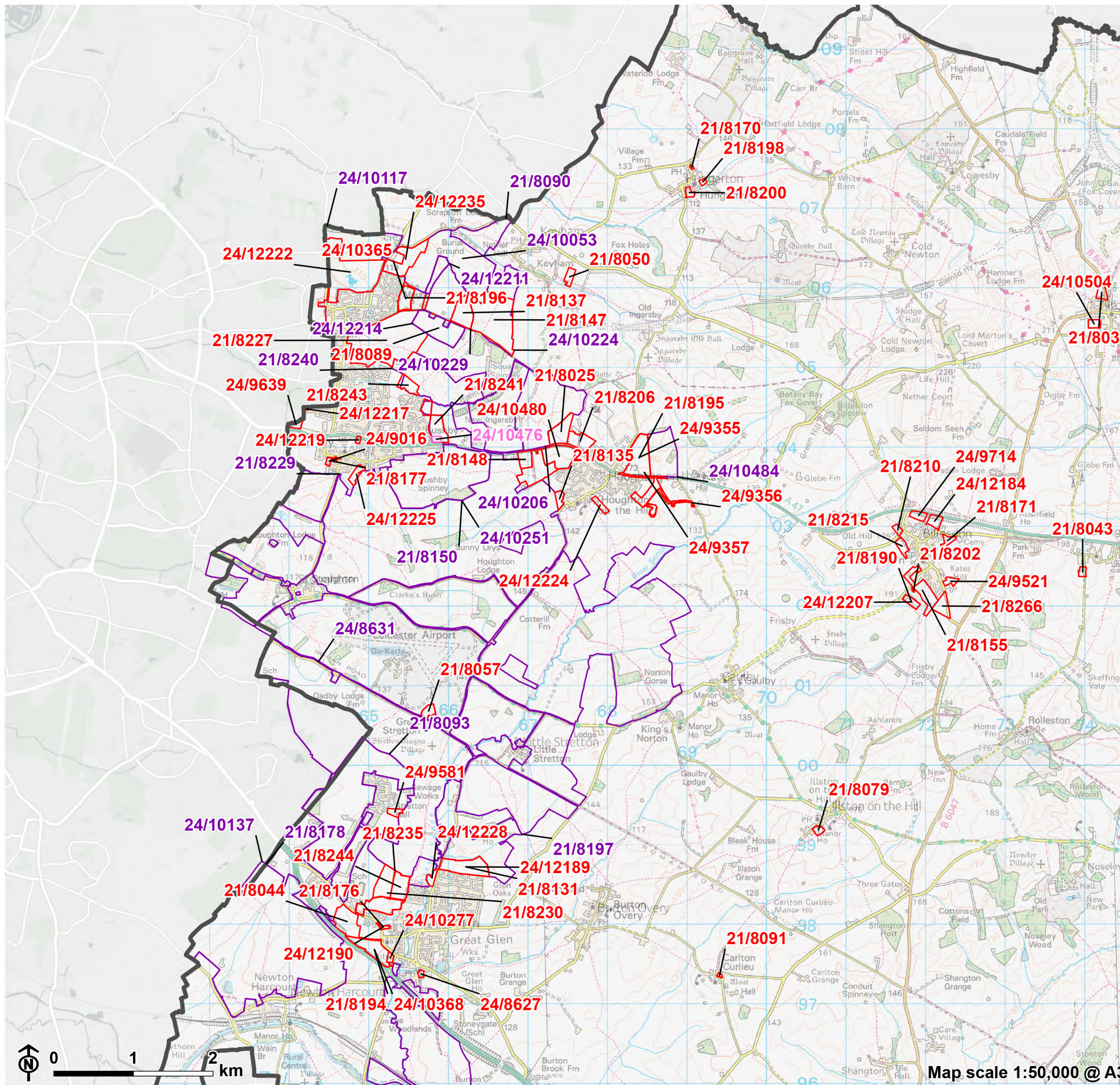
- Harborough District
- Grid extent
- Site category**
- Housing
- Mixed use
- Employment
- Renewable energy generation
- Gypsy and Traveller
- Retail

An interactive map showing the site options is available alongside the Strategic Housing and Economic Land Availability Assessment (SHELAA). This map can be accessed via the following link:

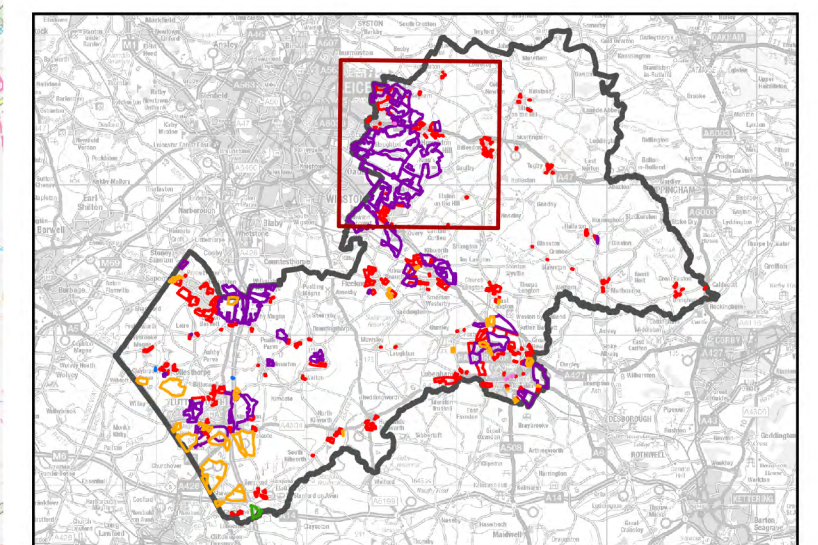
<https://harborough.opus4.co.uk/planning/localplan/maps/shelaa-2021-published-august-2022>

Map scale 1:160,000 @ A3

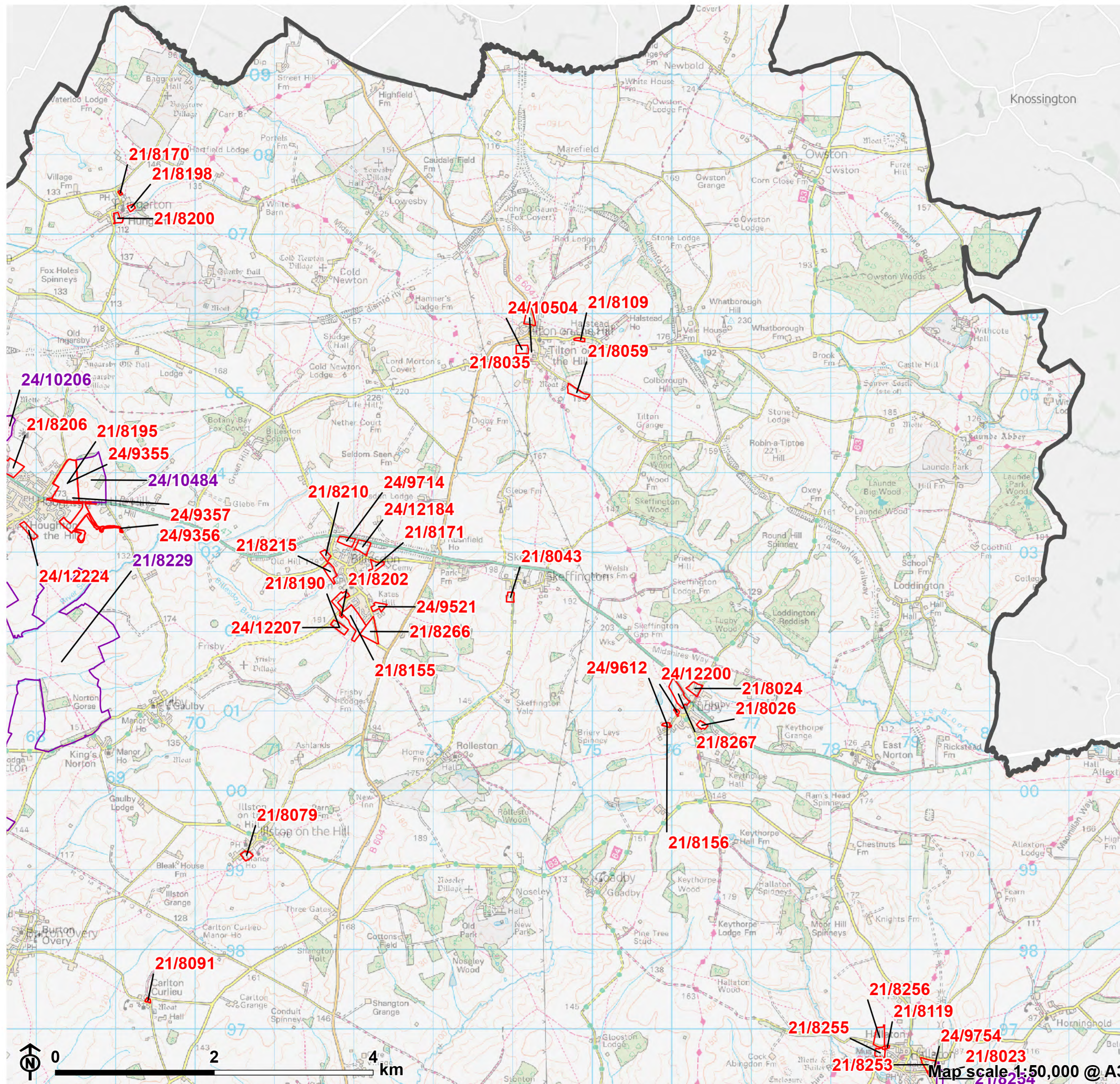
**Figure E.9: Site Options**  
**Grid 1 of 8**



- Harborough District
- Site category**
- Housing
- Mixed use
- Retail



**Figure E.9: Site Options**  
**Grid 2 of 8**



- Harborough District
- Site category**
- Housing
- Mixed use

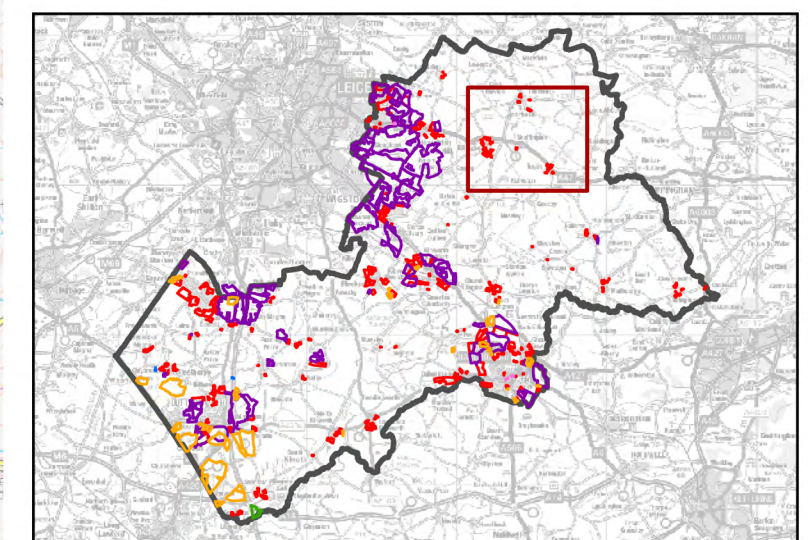
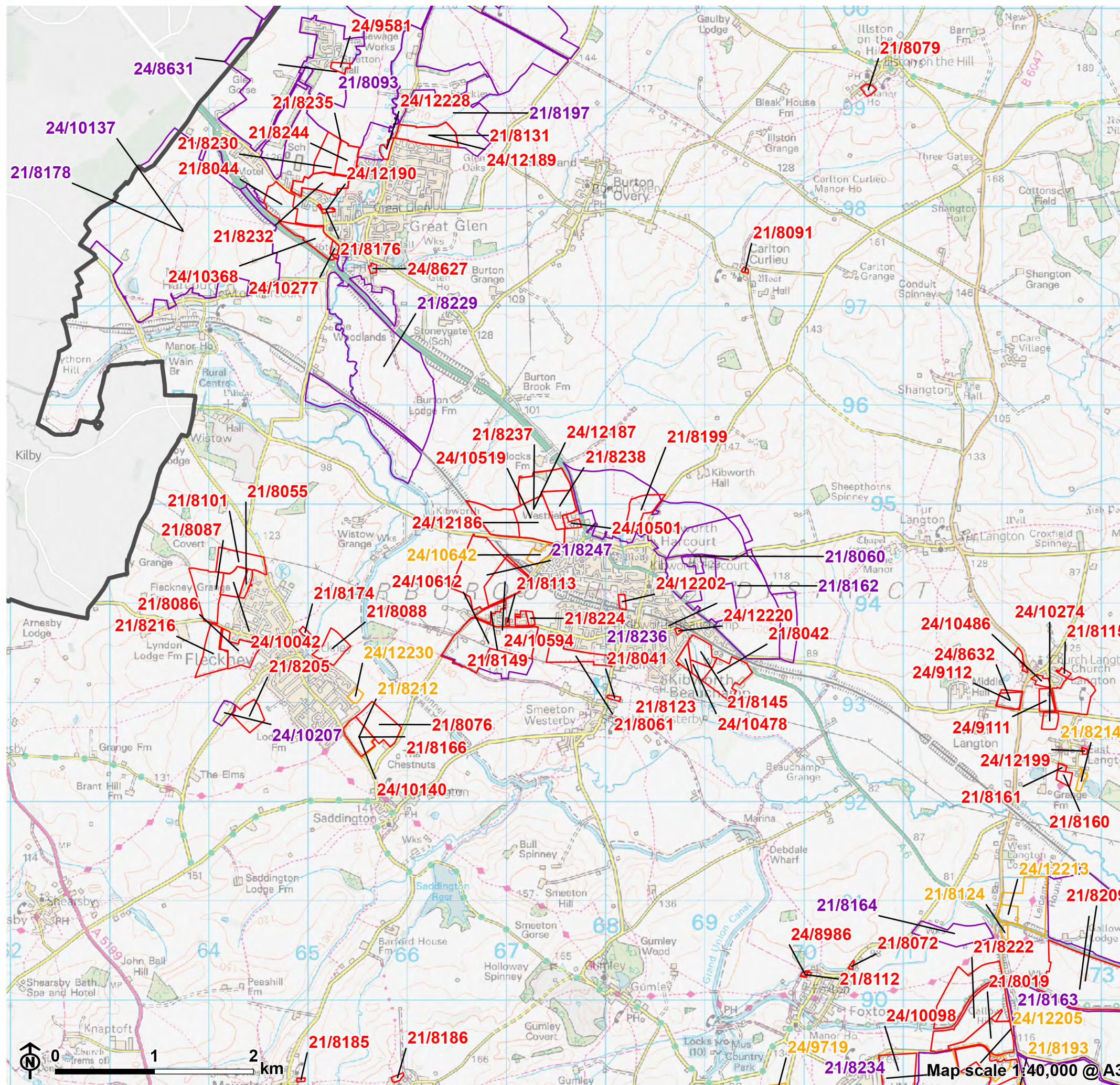
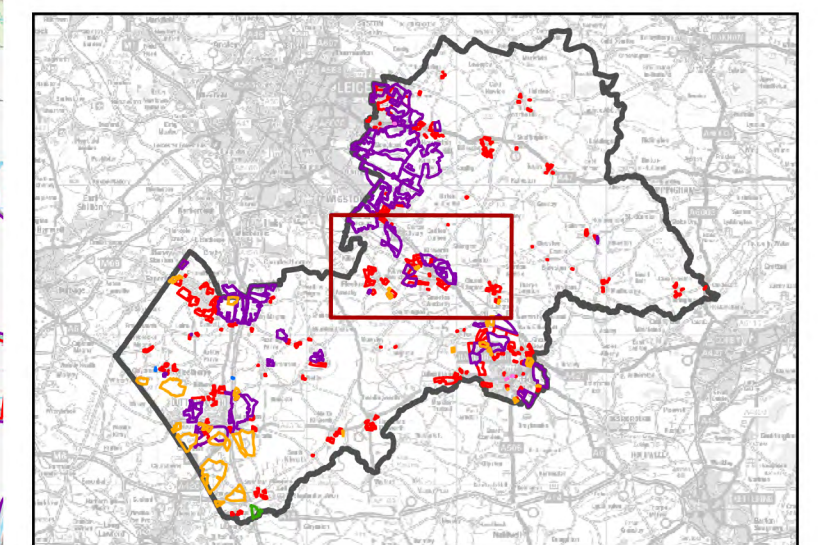


Figure E.9: Site Options  
Grid 3 of 8

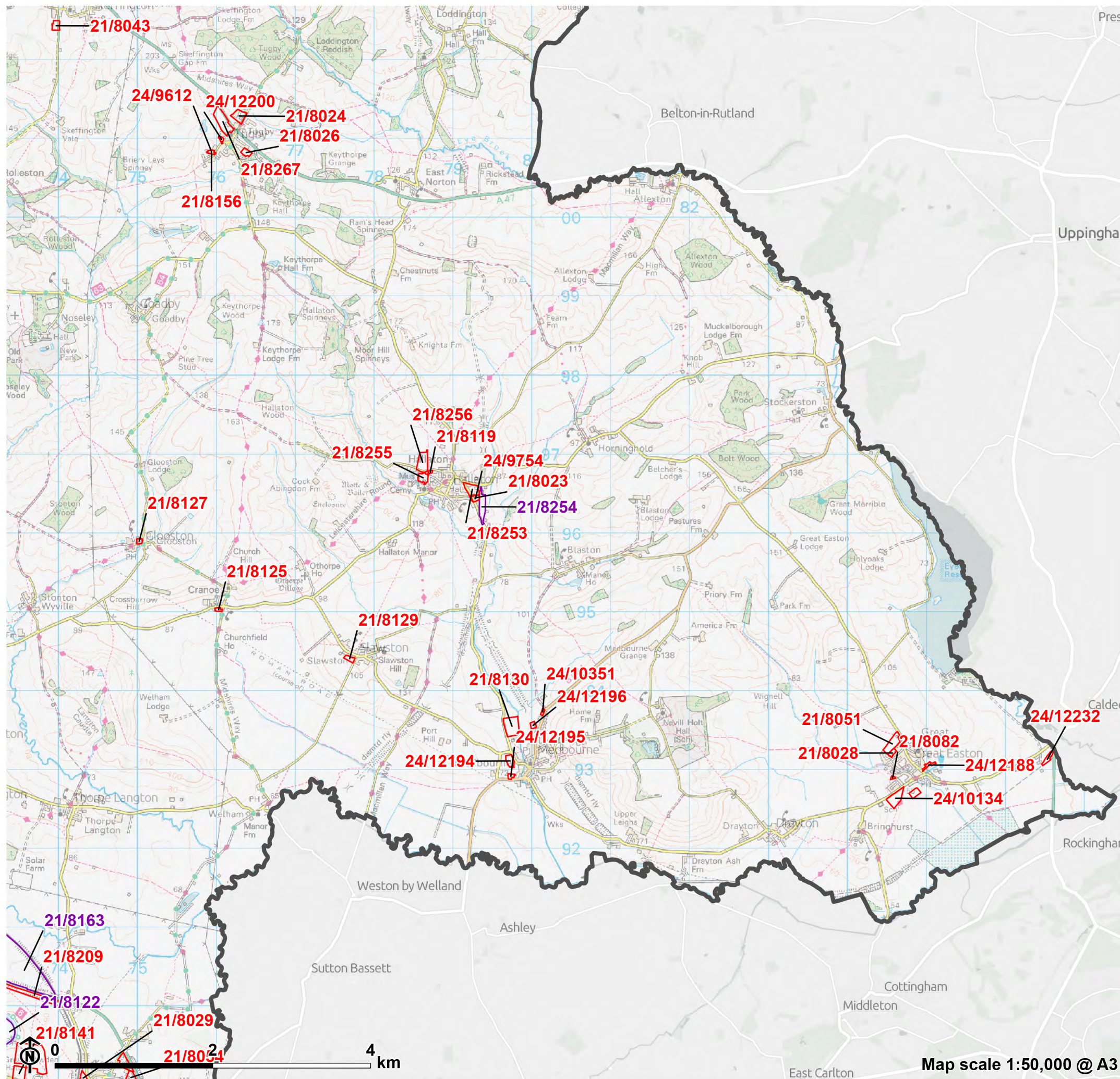


- Harbrough District
- Site category
  - Housing
  - Mixed use
  - Employment

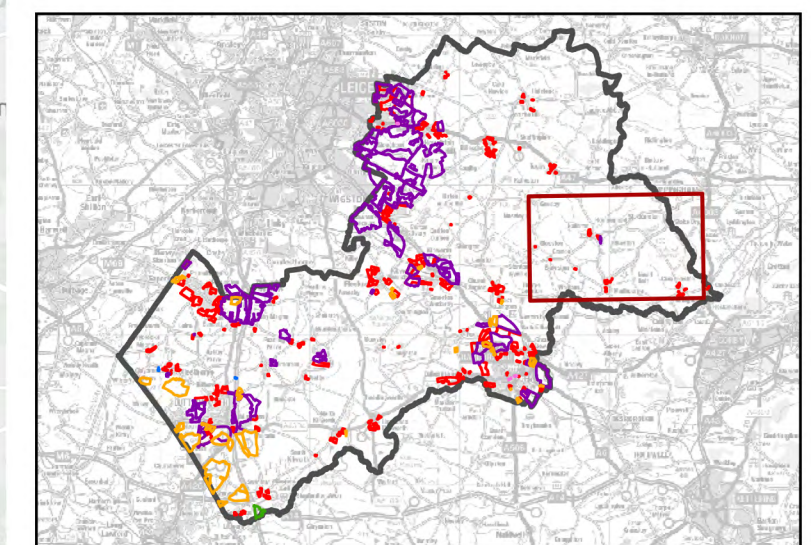




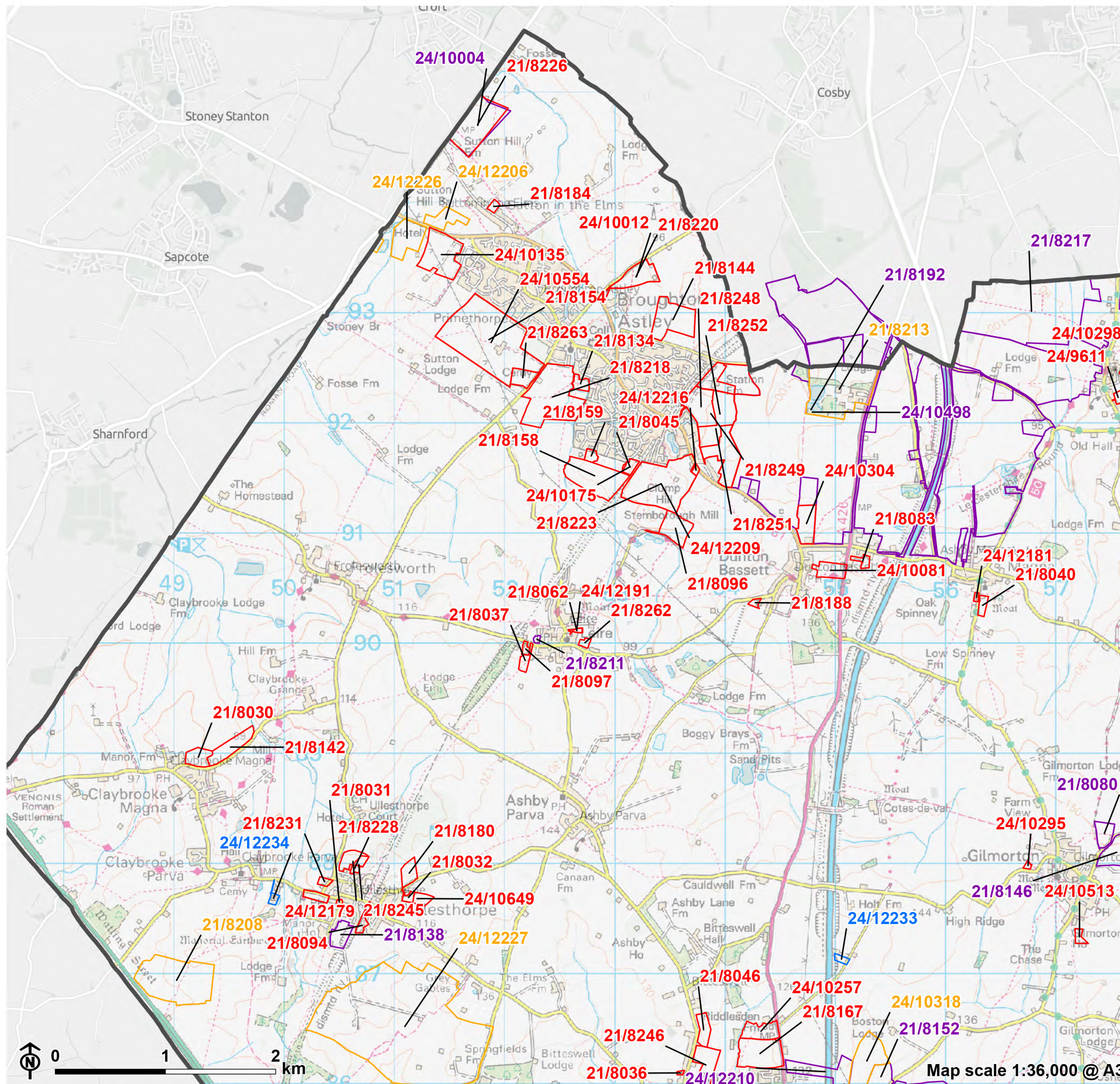
**Figure E.9: Site Options**  
**Grid 4 of 8**



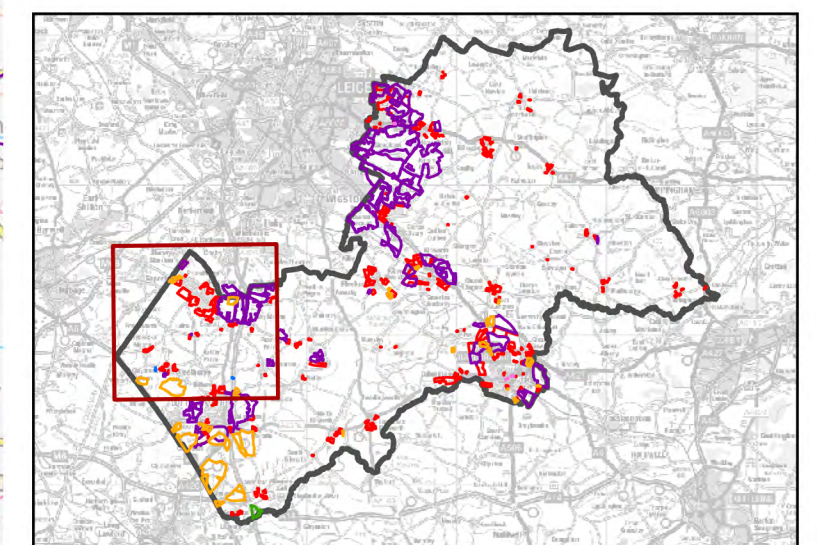
- Harborough District
- Site category**
- Housing
- Mixed use



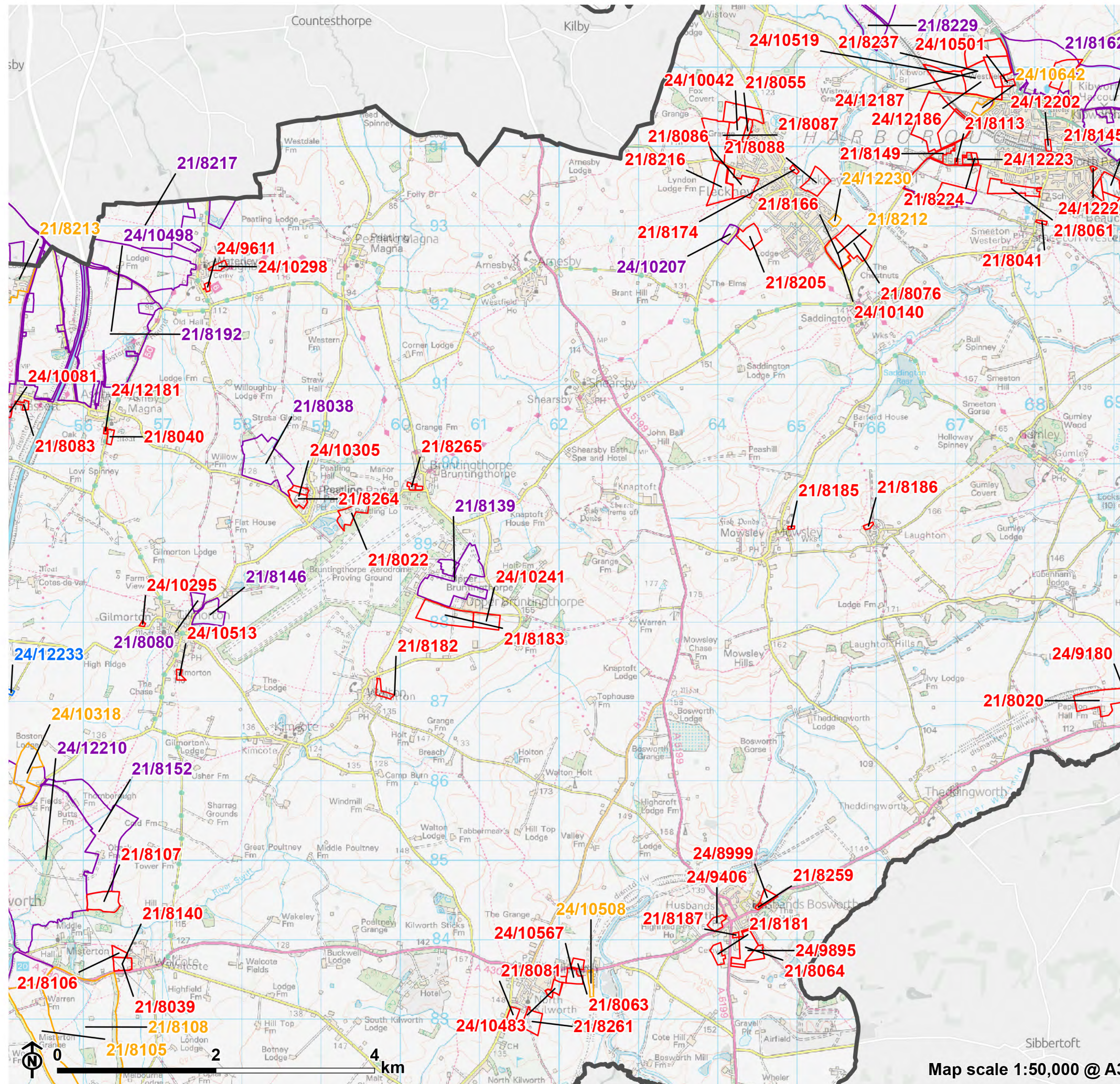
**Figure E.9: Site Options**  
**Grid 5 of 8**



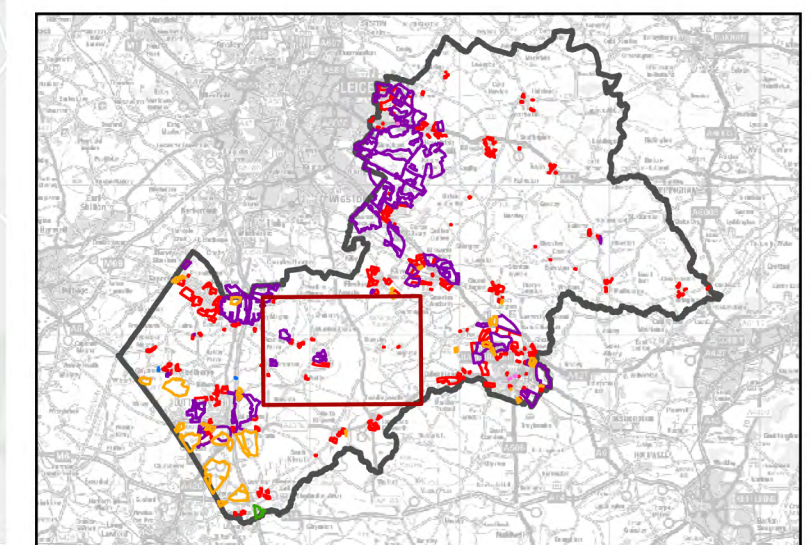
- Harborough District
- Site category**
- Housing
- Mixed use
- Employment
- Gypsy and Traveller



**Figure E.9: Site Options**  
 Grid 6 of 8

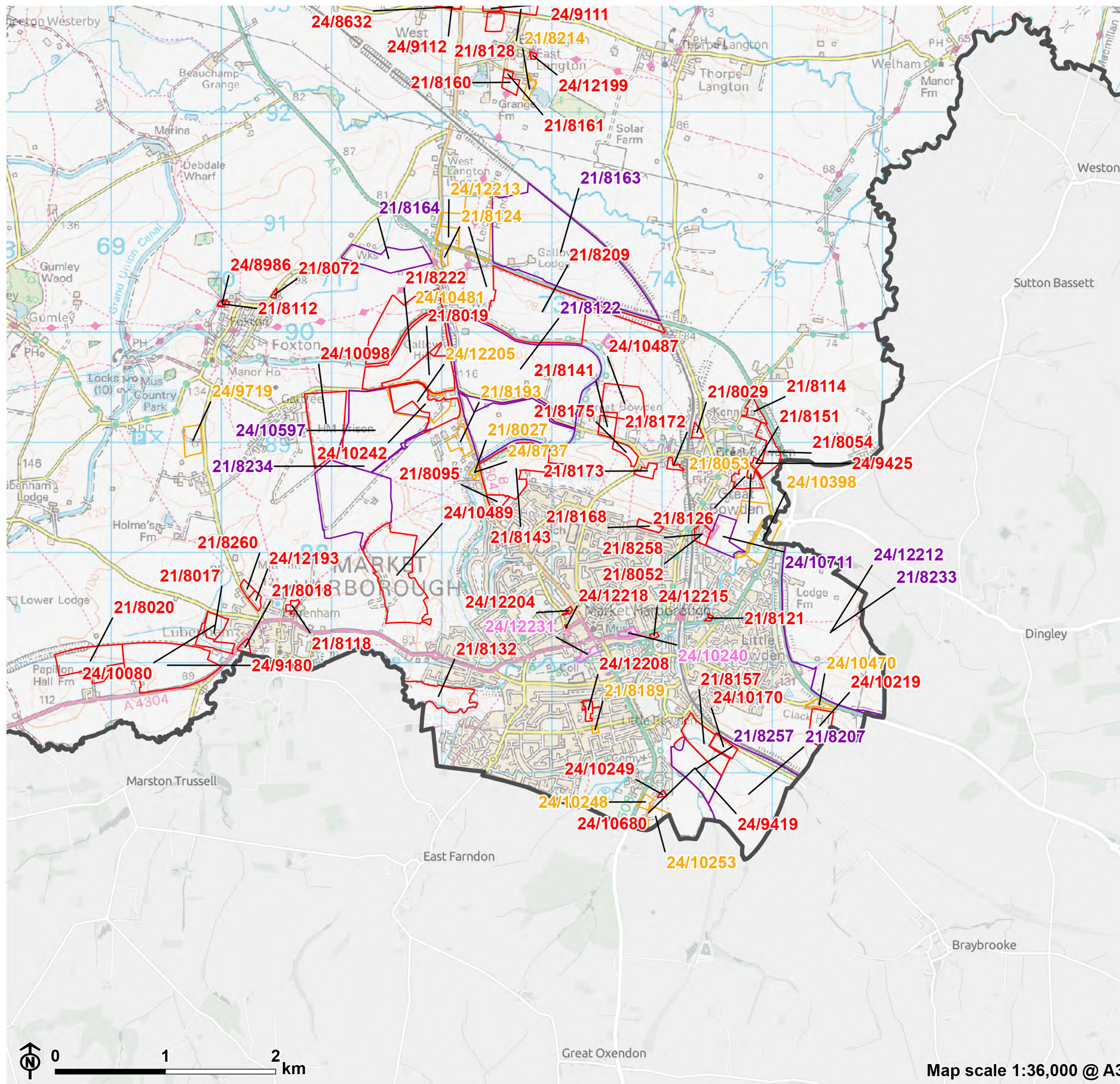


- Harborough District
- Site category**
- Housing
- Mixed use
- Employment
- Gypsy and Traveller

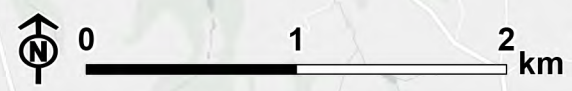
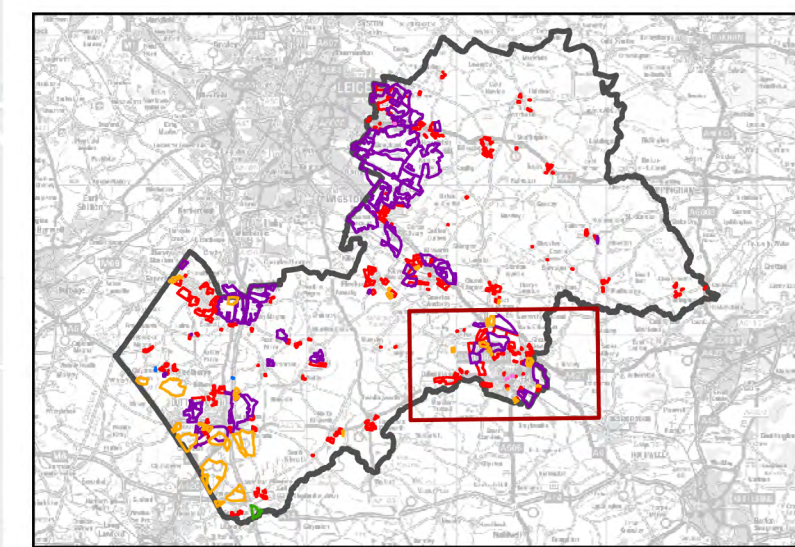


Map scale 1:50,000 @ A3

**Figure E.9: Site Options**  
Grid 7 of 8



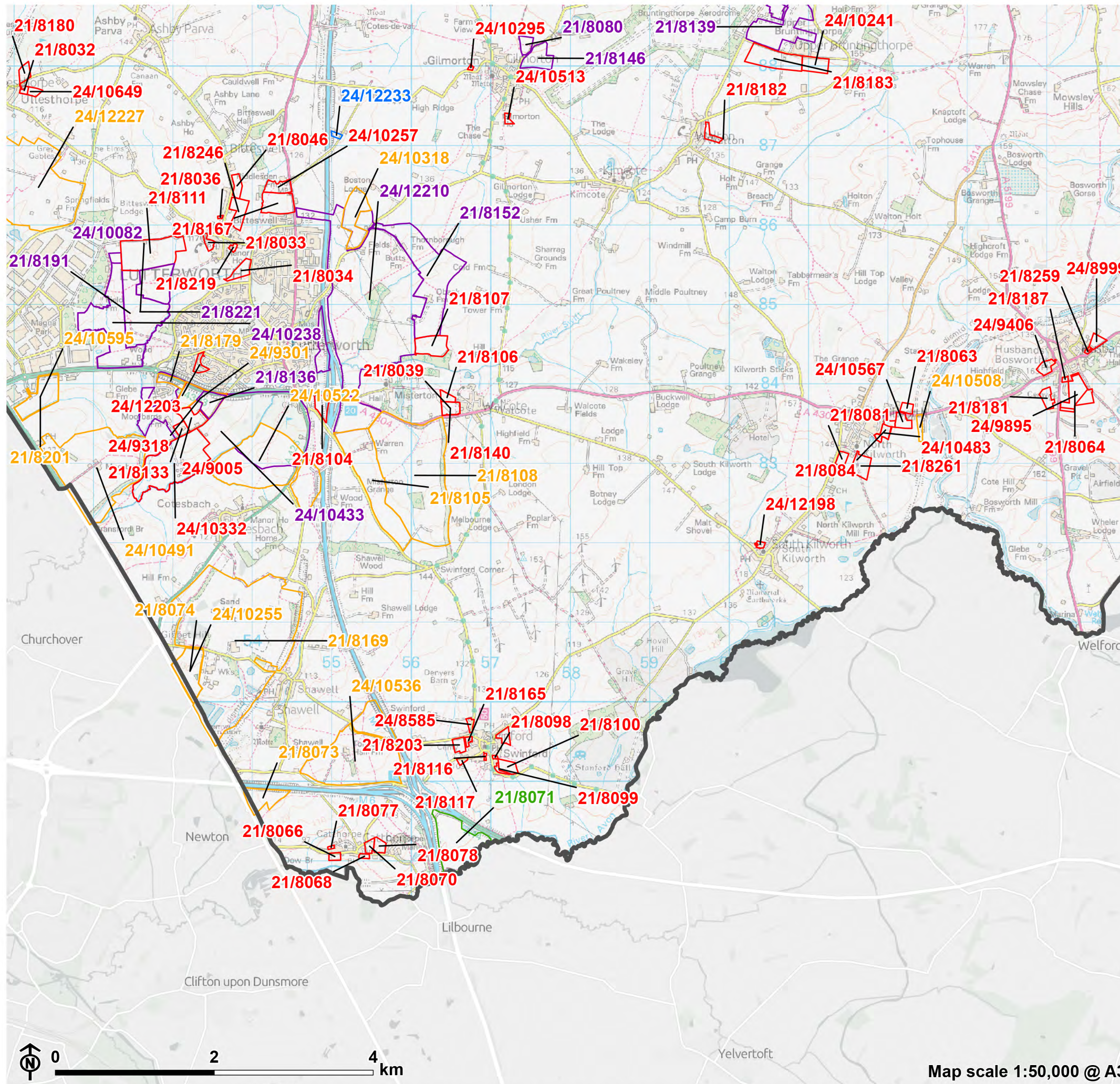
- Harborough District
- Site category**
- Housing
- Mixed use
- Employment
- Retail



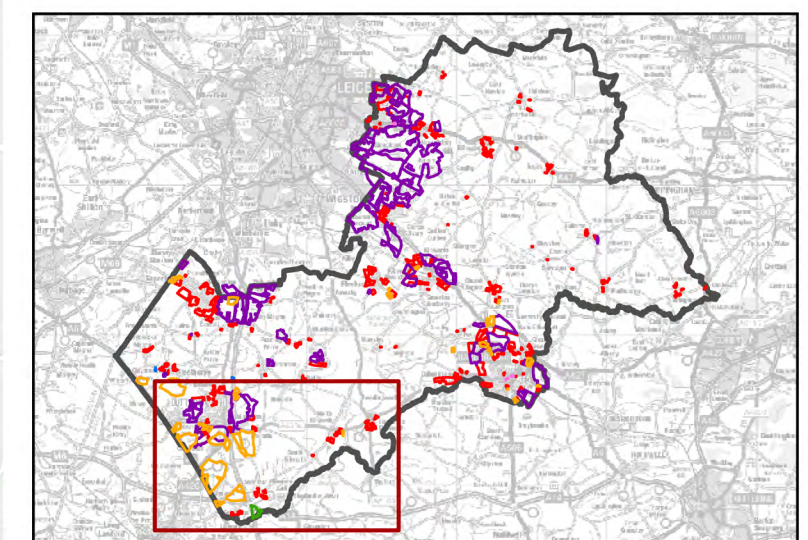
Map scale 1:36,000 @ A3



Figure E.9: Site Options  
 Grid 8 of 8



- Harborough District
- Site category**
- Housing
- Mixed use
- Employment
- Renewable energy generation
- Gypsy and Traveller



Report produced by LUC

# Report produced by LUC

## **Bristol**

12th Floor, Colston Tower, Colston Street, Bristol BS1 4XE  
0117 929 1997  
bristol@landuse.co.uk

## **Cardiff**

16A, 15th Floor, Brunel House, 2 Fitzalan Rd, Cardiff CF24 0EB  
0292 032 9006  
cardiff@landuse.co.uk

## **Edinburgh**

Atholl Exchange, 6 Canning Street, Edinburgh EH3 8EG  
0131 202 1616  
edinburgh@landuse.co.uk

## **Glasgow**

37 Otago Street, Glasgow G12 8JJ  
0141 334 9595  
glasgow@landuse.co.uk

## **London**

250 Waterloo Road, London SE1 8RD  
020 7383 5784  
london@landuse.co.uk

## **Manchester**

6th Floor, 55 King Street, Manchester M2 4LQ  
0161 537 5960  
manchester@landuse.co.uk

## **landuse.co.uk**

Landscape Design / Strategic Planning & Assessment  
Development Planning / Urban Design & Masterplanning  
Environmental Impact Assessment / Landscape Planning & Assessment  
Landscape Management / Ecology / Historic Environment / GIS & Visualisation